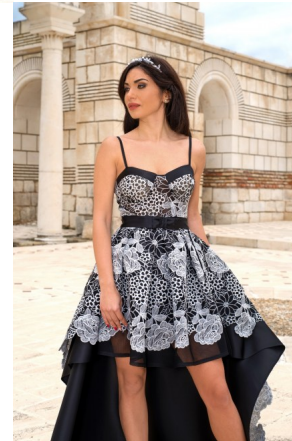


Embroidered Lace Floral Dress With Detachable Train



Dresses: Embroidered Lace Floral Dress With Detachable Train



Rating: Not Rated Yet

Price
219.00 €

[Ask a question about this product](#)

Description

Embroidered lace evening dress with two pieces: flared short dress and detachable train.
This gown is made from quality satin fabric and embroidery lace in black and white .
It is suitable for formal events.

- Fabric type: embroidery mesh fabric, lining
- Fabric consistency: embroidery mesh fabric, lining
- Clothing style: Formal event, Prom
- Lining: Lined
- Hem length: Floor
- Wash and care: Dry clean
- Color: Black With White Flowers

Reviews

There are yet no reviews for this product.